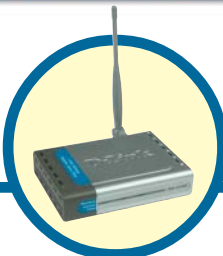


# D-Link Quick Installation Guide

This product can be set up using any current web browser, i.e., Internet Explorer 6 or Netscape Navigator 6.2.3.



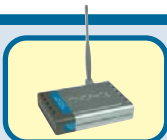
**DWL-2210AP**  
D-Link *AirPremier*<sup>™</sup>  
802.11g/2.4GHz Wireless  
Adaptive Access Point

## Before You Begin

**Networks with a DHCP Server:** The DWL-2210AP is DHCP enabled by default. Use the KickStart Wizard on the DWL-2210AP CD-ROM to discover and identify DWL-2210AP Access Points on your network.

**Networks without a DHCP Server:** The DWL-2210AP will default to an IP address of 192.168.0.50 with a subnet mask of 255.255.255.0. You will need to assign your computer a Static IP address within the same range as the DWL-2210AP's IP address for the purpose of configuring the DWL-2210AP.

## Check Your Package Contents



**DWL-2210AP AirPremier<sup>™</sup> Wireless Adaptive Access Point**



**CD-ROM with Manual and Software**



**Ethernet (CAT5e UTP/Straight-Through) Cable**



**PoE Base Unit**



**Power Cord**



**Power Adapter**



Using a power adapter with a different voltage rating will damage and void the warranty of this product.

If any of the above items are missing, please contact your reseller.

# 1

## Connecting the DWL-2210AP to Your Network

There are two methods of powering the DWL-2210AP. The power adapter can plug directly into the unit or plug into the PoE (Power over Ethernet) base unit. To connect power directly to the DWL-2210AP, please follow the steps on this page. To use the PoE base unit, please follow the steps on the next page.

### Connecting Power Directly to the DWL-2210AP

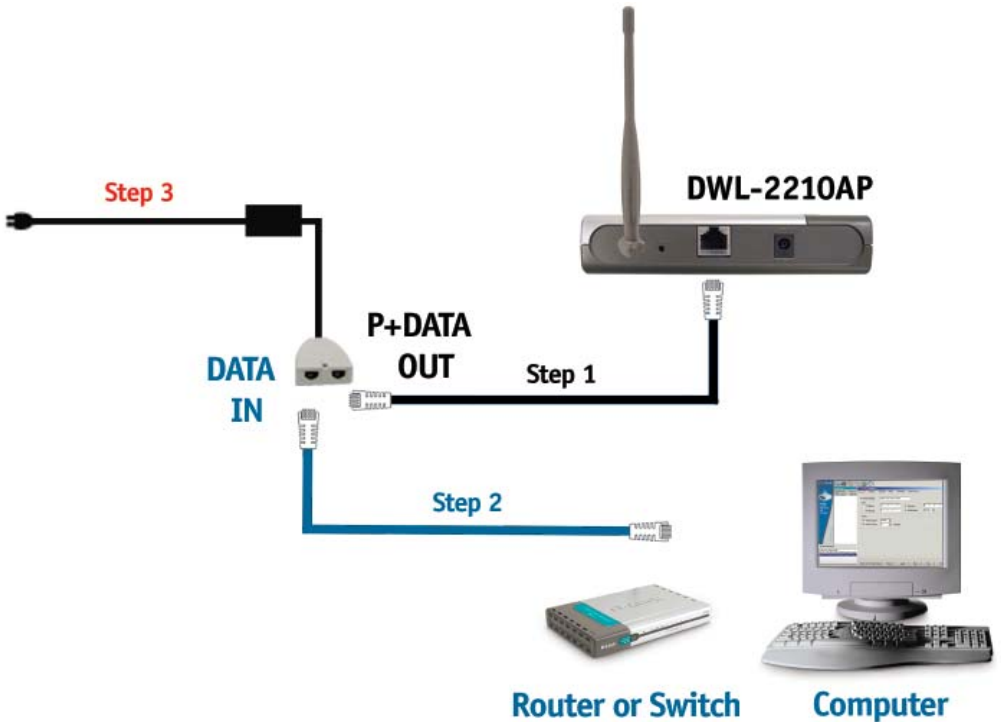
- A.** Connect the power adapter to the **receptor** at the back panel of the DWL-2210AP. Plug the other end of the power adapter to a wall outlet or power strip. The Power LED will turn **ON** to indicate proper operation.
- B.** Insert one end of the Ethernet cable to the **Ethernet port** on the back panel of the DWL-2210AP and the other end of the Ethernet cable to an **Ethernet Broadband Router** (i.e., D-Link DI-604) or **Switch** (i.e., D-Link DSS-5+). **Note:** You also have the option of connecting the DWL-2210AP directly to the computer that will be used for configuration. The LAN LED light should illuminate to indicate a proper Ethernet connection. (**Note:** The Ethernet Port on the DWL-2210AP is Auto-MDI/MDIX. This allows you to use a straight-through or crossover Ethernet cable to connect to the Ethernet port on the DWL-2210AP.)
- C.** The DWL-G650 *AirPlus Xtreme G™* Wireless Cardbus Adapter and the DWL-G520 *AirPlus Xtreme G™* Wireless PCI Adapter will connect, right out of the box with the DWL-2210AP, using their default wireless settings. Computers with 802.11b wireless adapters can also connect to the DWL-2210AP.

# 1

## Connecting the DWL-2210AP to Your Network (continued)

### Connecting PoE (Power over Ethernet) to the DWL-2210AP

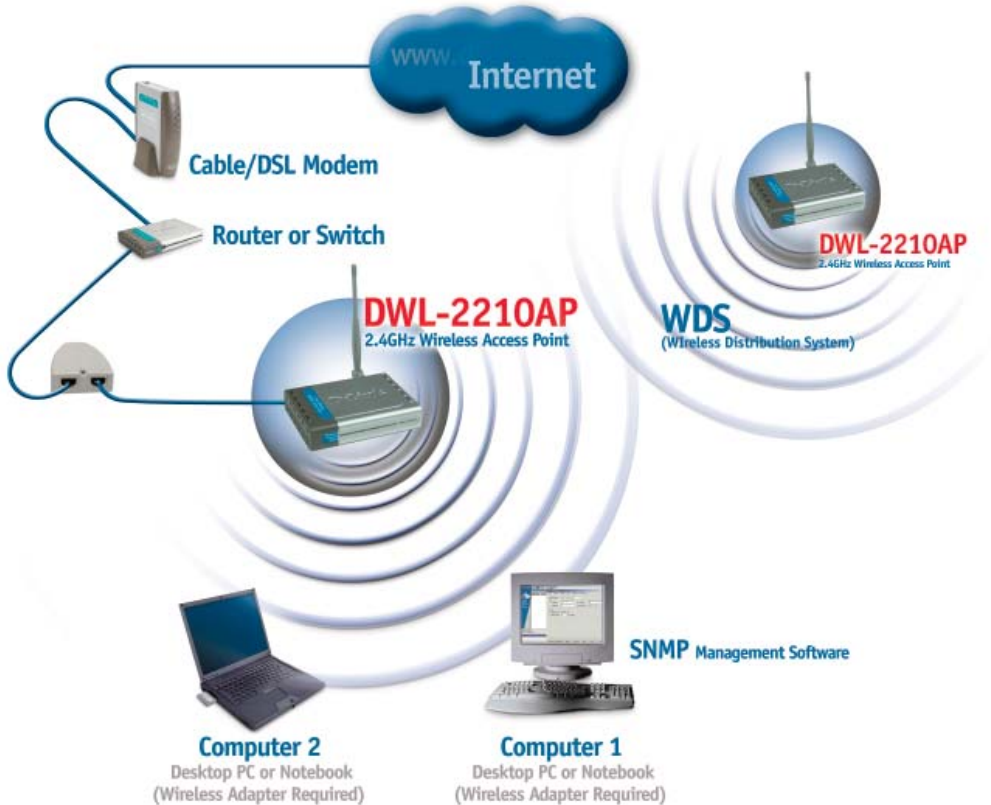
- **Step 1:** Connect one end of an Ethernet cable (included with your package) to the **LAN port** on the DWL-2210AP and the other end of the Ethernet cable to the port labeled **P+DATA OUT** on the PoE base unit.
- **Step 2:** Connect another Ethernet cable from the **DATA IN** port on the PoE base unit to your router/switch or to a PC.
- **Step 3:** Attach the power adapter to the connector labeled **POWER IN** on the PoE base unit. Attach the power cord to the power adapter and into an electrical outlet.



# 1

## Connecting the DWL-2210AP to Your Network (continued)

When you have completed the steps in this *Quick Installation Guide*, your connected network should look similar to this:



# 1

## Connecting the DWL-2210AP to Your Network (continued)

### Front Panel

#### LAN LED

A solid green light indicates a good network connection. The light will blink when there is activity on the LAN.



#### Power LED

The Power LED will light up solid green when properly connected to a valid power source.

#### WLAN LED

The Wireless LAN LED will blink to indicate wireless network activity.

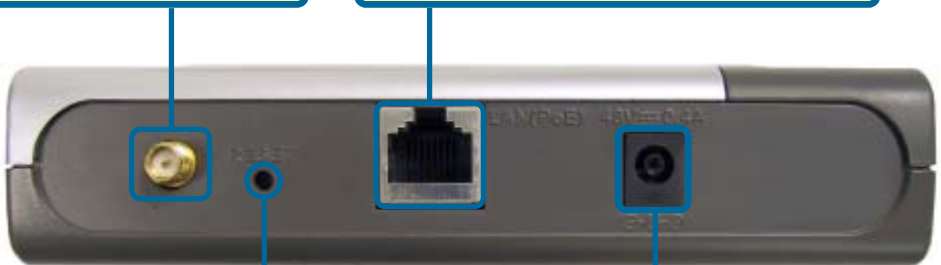
### Rear Panel

#### Antenna Connector

Attach the wireless antenna to this connector.

#### LAN Port

Connects to a computer, a switch, router, or PoE base unit using an Ethernet cable.



#### Reset Button

Pressing this button restores the Access Point to its original factory default settings.

#### Receptor

Used to connect Power Adapter directly to unit.

# 2

## Using the KickStart Wizard on a Network with a DHCP Server



The KickStart Wizard is used to discover and identify DWL-2210AP Access Points on a network with a DHCP server. KickStart will not discover any other devices. If your network does not have a DHCP server, please skip to Section 3 on page 9.

Insert the DWL-2210AP CD-ROM into your CD-ROM drive. The autorun screen should load automatically. If not, go to My Computer and double click on your CD-ROM icon.

Click on **KickStart (DHCP networks only)**



The KickStart welcome screen appears.

Click **Next**



The KickStart Wizard will search for DWL-2210AP Access Points on your network.



# 2

## Using the KickStart Wizard on a Network with a DHCP Server (continued)

KickStart will display the Access Point(s) on your network. If necessary, click Back to rescan the network.

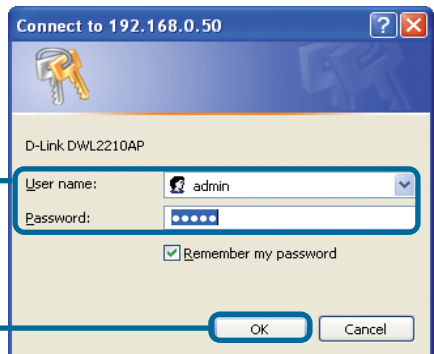


Click **Next**



Click **Administration Console**

The DWL-2210AP login screen will appear.



Type **admin** in the User name and Password fields.

Click **OK**

## 2

# Using the KickStart Wizard on a Network with a DHCP Server (continued)

Home | Help | Support

**D-Link**  
Building Networks for People

**AirPremier™**  
DWL-2210AP 2.4Ghz Wireless Adaptive Access Point

**BASIC SETTINGS**

**Cluster**

Access Points  
Users  
Sessions

**Status**

Interfaces  
Events  
Statistics  
Associations  
Neighbors

**Advanced**

---

*Provide basic settings*

**1** Review Description of this Access Point ...

These fields show information specific to the access point.

IP Address: 192.168.0.50  
 MAC Address: 00:0e:81:01:01:0e  
 Firmware Version: 1.0.2.8  
 Location:

**2** Provide Network Settings ...

These settings apply to this access point. The same settings will apply to new access points joining the cluster if the policy for adding new access points is set to "configure automatically".

Current Password:   
 New Password:   
 Confirm New Password:   
 Network Name (SSID):

**3** Set Configuration Policy for New Access Points ...

If you choose "configure automatically" as the policy for adding new access points, new access points will join the cluster when they are powered up and inherit the settings specified on this page. (If you choose to ignore new access points, you must configure them manually.)

New Access Points:

**4** Settings ...

Click "Update" to save the new settings.

**?**

For a typical access point which is a member of a cluster, provide the minimal set of configuration information needed to set up the access point and start wireless networking as described in the numbered steps on this page.

For a **standalone access point** the Basic Settings page indicates only that the current mode is standalone and provides a button for adding the access point to a cluster (group). If you click on any of the Cluster tabs for an AP in standalone mode you will be redirected to this Basic Settings page because Cluster settings do not apply to standalone APs.

**Caution:**  
If you do not have a DHCP server on the internal network and do not plan to use one, the first thing you must do after bringing up the access point is change the Connection Type from DHCP to Static IP.

To change the Connection Type, go to the [Internet](#) tab.

[More ...](#)

Copyright © 2004 D-Link Systems, Inc. All rights reserved. Powered by: Instant802 Networks

The DWL-2210AP Web-management interface will appear. Please refer to the user manual located on the CD-ROM for details on configuring the DWL-2210AP.



# 3

## Using a Static IP Address to Connect to the DWL-2210AP

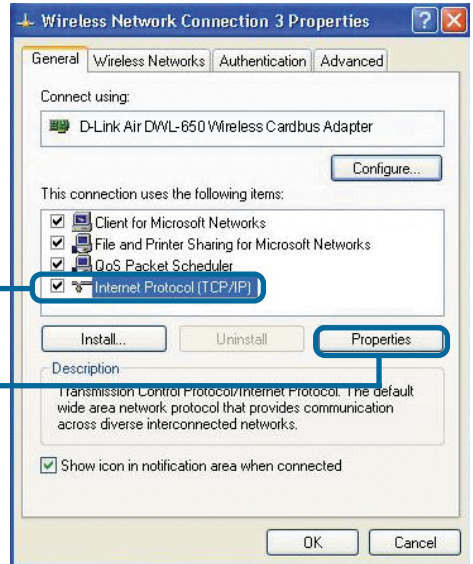
To assign a Static IP Address on the computer that you are using to configure the DWL-2210AP, follow the steps for the appropriate operating system:

### Windows XP:

Go to **Start**, click on **Control Panel** double-click on **Network Connections**, right-click on **Local Area Connections** and select **Properties**.

Highlight **Internet Protocol (TCP/IP)**

Click **Properties**

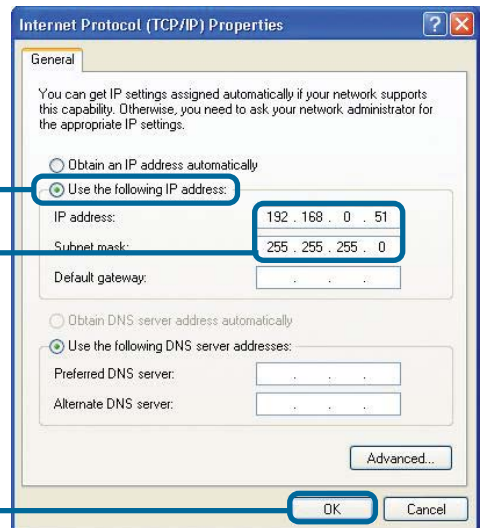


Input a static IP address in the same range as the DWL-2210AP's IP address of 192.168.0.50. Each computer/device must have a unique IP address.

Select **Use the following IP address**

IP address: **192.168.0.51**

Subnet mask: **255.255.255.0**



Click **OK**

# 3

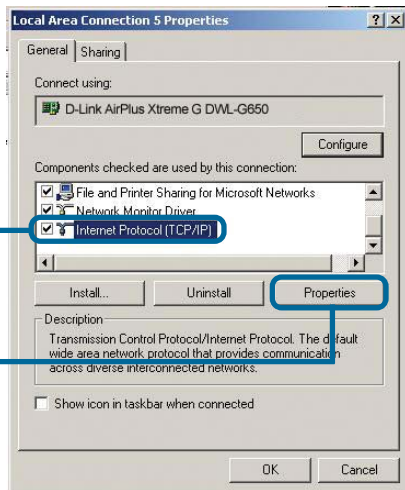
## Using a Static IP Address to Connect to the DWL-2210AP

Windows 2000:

Go to **Start > Settings > Network and Dial-up Connections**. Double-click on the **Local Area Connection** associated with the Network Adapter installed on your system and select **Properties**.

Click **Internet Protocol (TCP/IP)**

Click **Properties**



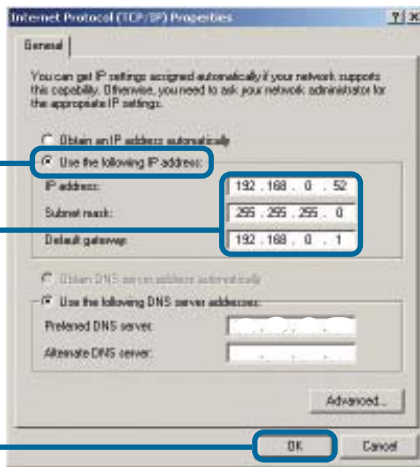
Input a static IP address in the same range as the DWL-2210AP's IP address of 192.168.0.50. Each computer/device must have a unique IP address.

Select **Use the following IP address**

IP address: **192.168.0.52**

Subnet mask: **255.255.255.0**

Click **OK**



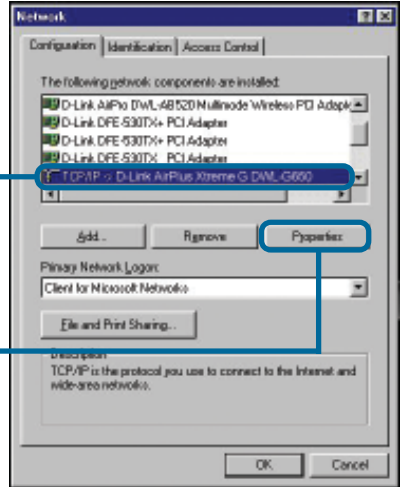
# 3

## Using a Static IP Address to Connect to the DWL-2210AP

Windows Me & 98SE:

Go to **Start > Settings > Control Panel >**  
Double-click on the **Local Area Connection**  
associated with the Network Adapter installed  
on your system > select **Properties**

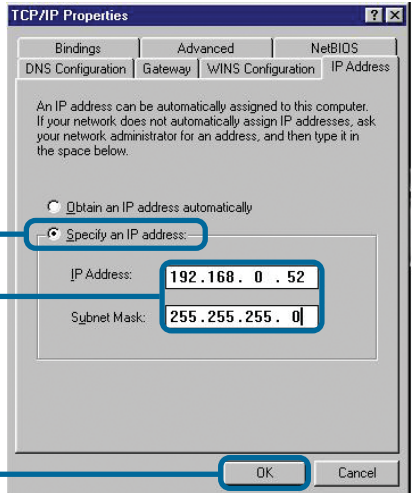
Click **Internet Protocol (TCP/IP)**



Click **Properties**

Input a static IP address in the same range  
as the DWL-2210AP's *IP address of*  
*192.168.0.50. Each computer/device must*  
*have a unique IP address.*

Select **Specify IP Address**



**IP address: 192.168.0.52**  
**Subnet mask: 255.255.255.0**

Click **OK**

# 3

## Using a Static IP Address to Connect to the DWL-2210AP

Mac OS X:

Go to the **Apple Menu** and **Select System Preferences.**

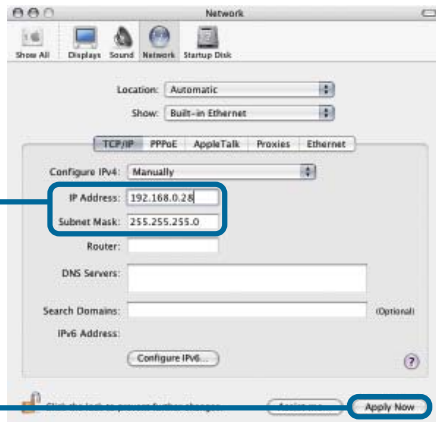
Click on **Network**



Select **Built in Ethernet** from the Show pull-down menu



Select **Manually** in the Configuration pull-down menu



Input a static IP address in the same range as the DWL-2210AP's IP address of 192.168.0.50. Each computer/device must have a unique IP address.

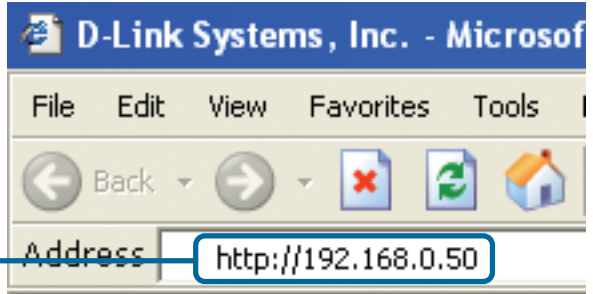
**IP address: 192.168.0.28**  
**Subnet mask: 255.255.255.0**

Click on **Apply Now**

# 3

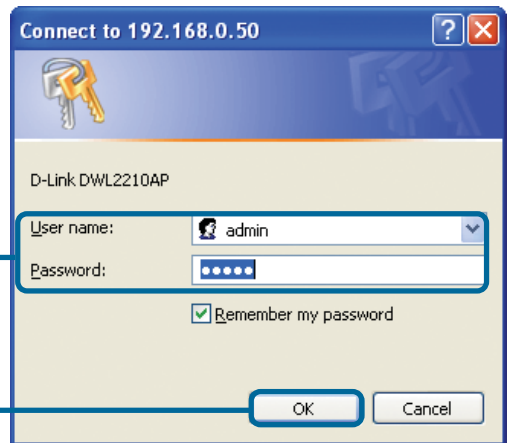
## Using a Static IP Address to Connect to the DWL-2210AP

Open up your Web browser.



Type **http://192.168.0.50** in the address bar and hit Enter or Return.

The DWL-2210AP login screen will appear.



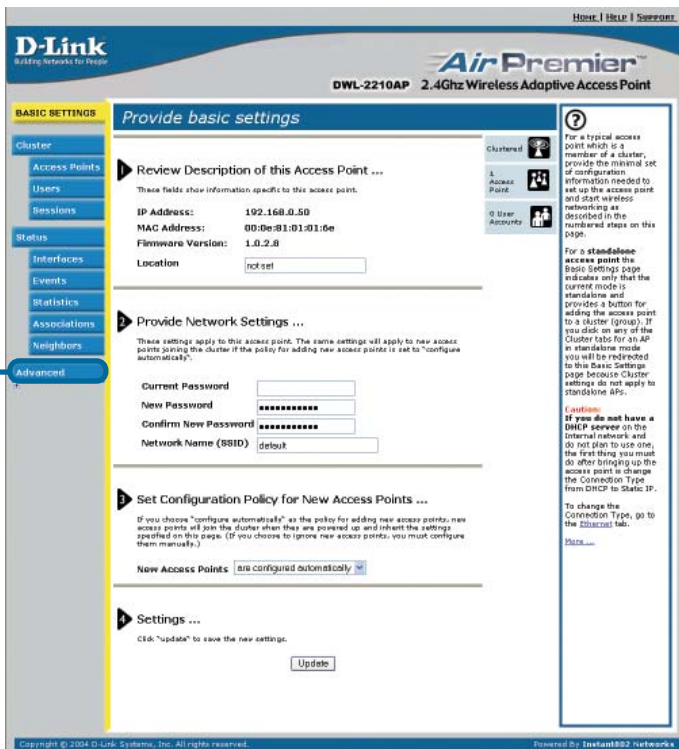
Type **admin** in the user name and password fields.

Click **OK**

# 3

## Using a Static IP Address to Connect to the DWL-2210AP

The Web-management interface screen will appear.



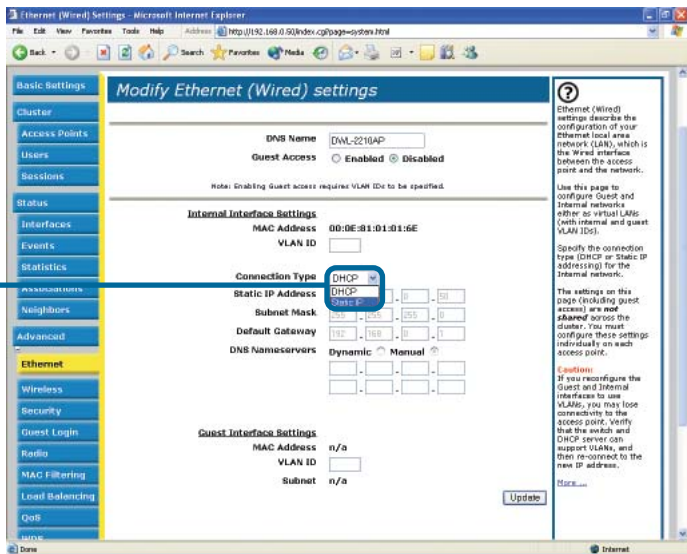
Click **Advanced**



Click **Ethernet**

# 3

## Using a Static IP Address to Connect to the DWL-2210AP

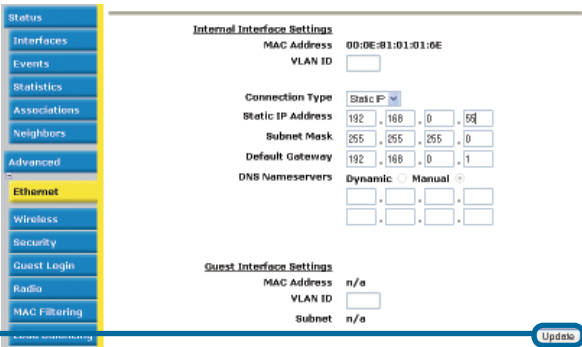


Under Connection Type, Select **Static IP**

Enter a **Static IP Address**, **Subnet Mask**, and **Default Gateway**.

Connection Type	Static IP
Static IP Address	192 . 168 . 0 . 55
Subnet Mask	255 . 255 . 255 . 0
Default Gateway	192 . 168 . 0 . 1

The DWL-2210AP defaults to a static IP address of 192.168.0.50. Each device on the network must have a unique IP address. It is recommended that you assign an IP address that varies the last digit from the default address, such as 192.168.0.55. By doing this you will avoid an IP conflict if another DWL-2210AP is added to the network.



Once you've made your changes, Click **Update**

Please refer to the user manual located on the CD-ROM for additional details on configuring the DWL-2210AP.

# Technical Support

You can find software updates and user documentation on the D-Link website.

D-Link provides free technical support for customers within the United States and within Canada for the duration of the warranty period on this product.

U.S. and Canadian customers can contact D-Link technical support through our website, or by phone.

## Tech Support for customers within the United States:

### ***D-Link Technical Support over the Telephone:***

(877) 453-5465

Monday to Friday, 6:00am to 6:00pm PST.

### ***D-Link Technical Support over the Internet:***

<http://support.dlink.com>

email:[support@dlink.com](mailto:support@dlink.com)

## Tech Support for customers within Canada:

### ***D-Link Technical Support over the Telephone:***

(800) 361-5265

Monday to Friday 7:30am to 12:00am EST

### ***D-Link Technical Support over the Internet:***

<http://support.dlink.ca>

email:[support@dlink.ca](mailto:support@dlink.ca)

